



Features

- Single coil or double latching power relay
- Creepage distance 8.4mm
- Heavy contact load, strong shock and vibration resistance
- UL/CUL certified

Contact Data

| | | | |
|---------------------------|--|---------------------|--|
| Contact Arrangement | 1A = SPST 1C = SPDT | Contact Rating N.O. | 16A @ 250VAC resistive, 50k cycles, 85C ambient |
| Contact Resistance | < 50 milliohms initial | N.C. | 16A @ 250VAC resistive, 50k cycles, 85C ambient |
| Contact Material | AgSnO ₂ , AgSnO ₂ In ₂ O ₃ | | |
| Maximum Switching Power | 4000VA | | |
| Maximum Switching Voltage | 300VAC | | |
| Maximum Switching Current | 20A | | |

Coil Data

| Coil Voltage VDC | | Coil Resistance Ω +/- 10% | | Pick Up Voltage VDC (max) 70% of rated voltage | Pulse Magnitude ms | Coil Power W | Operate Time ms | Reset Time ms |
|------------------|------|---------------------------|-----|---|--------------------|--------------|-----------------|---------------|
| Rated | Max | .4W | .6W | | | | | |
| 3 | 3.9 | 22.5 | 15 | 2.1 | ≥50 | .4 .6 | ≤10 | ≤10 |
| 5 | 6.5 | 62.5 | 42 | 3.5 | | | | |
| 6 | 7.8 | 90.0 | 60 | 4.2 | | | | |
| 9 | 11.7 | 202.5 | 135 | 6.3 | | | | |
| 12 | 15.6 | 360.0 | 240 | 8.4 | | | | |
| 24 | 31.2 | 1440.0 | 886 | 16.8 | | | | |

General Data

| | | |
|------------------------------|---------------------------------|----------------------------|
| Electrical Life @ rated load | 50K cycles, typical | |
| Mechanical Life | 500K cycles, typical | |
| Insulation Resistance | 1000 Ω min. @ 500VDC | |
| Dielectric Strength | Coil to Contact | 5000V rms min. @ sea level |
| | Contact to Contact | 1000V rms min. @ sea level |
| Shock Resistance | 98m/s ² for 11 ms | |
| Vibration Resistance | 1.50mm double amplitude 10~55Hz | |
| Operating Temperature | -40°C to +85°C | |
| Storage Temperature | -40°C to +85°C | |
| Solderability | 260°C for 5 s | |
| Weight | 13g | |

L114FL

Ordering Information

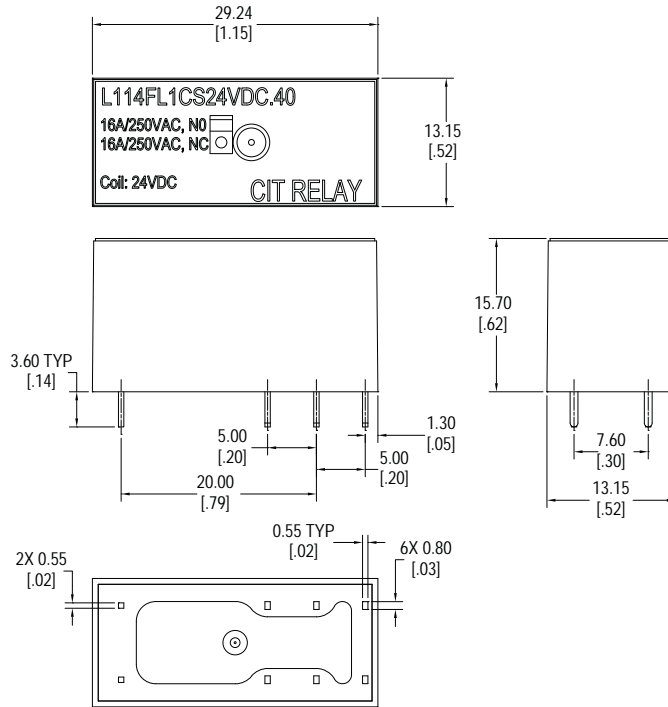
| | | | | | | | |
|---|--------|----|---|-------|-----|--|--|
| 1. Series | L114FL | 1C | S | 12VDC | .40 | | |
| L114FL | | | | | | | |
| 2. Contact Arrangement | | | | | | | |
| 1A = SPST | | | | | | | |
| 1C = SPDT | | | | | | | |
| 3. Sealing Option | | | | | | | |
| S = Sealed (standard) | | | | | | | |
| 4. Coil Voltage | | | | | | | |
| 3VDC | | | | | | | |
| 5VDC | | | | | | | |
| 6VDC | | | | | | | |
| 9VDC | | | | | | | |
| 12VDC | | | | | | | |
| 24VDC | | | | | | | |
| 5. Coil Power | | | | | | | |
| .40 = .40W (single coil only) | | | | | | | |
| .60 = .60W (double coil only) | | | | | | | |
| 6. Coil Polarity | | | | | | | |
| Blank = Standard Polarity (standard) | | | | | | | |
| R = Reversed Polarity | | | | | | | |
| 7. Latching Options | | | | | | | |
| Blank - Single Coil Latching (standard) | | | | | | | |
| D = Double Coil Latching | | | | | | | |
| 8. Contact Material | | | | | | | |
| Blank = AgSnO ₂ | | | | | | | |
| U = AgSnO ₂ In ₂ O ₃ | | | | | | | |

L114FL

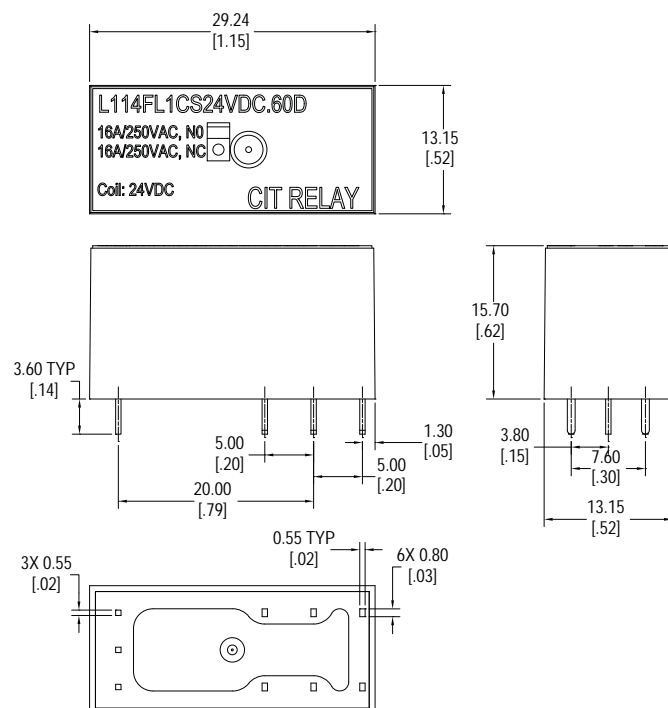
Dimensions

Units = mm

Standard Sealed - Single Coil



Standard Sealed - Double Coil



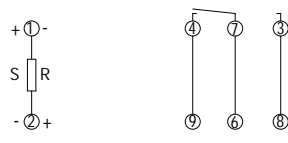
L114FL

Schematics & PC Layouts - Single Coil

Bottom Views



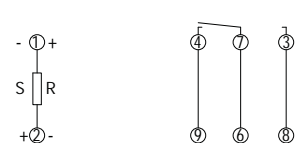
1A



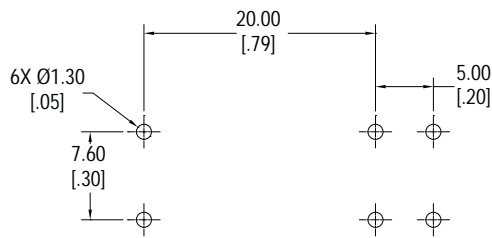
1C



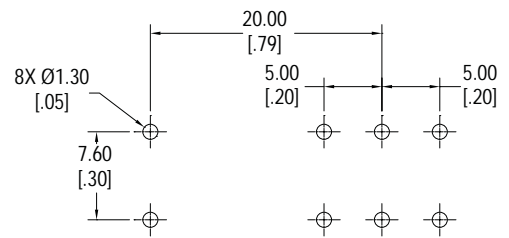
1A Reversed Polarity



1C Reversed Polarity



1A Single Coil



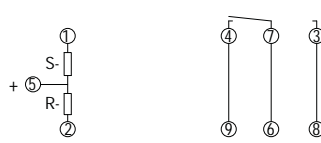
1C Single Coil

Schematics & PC Layouts - Double Coil

Bottom Views



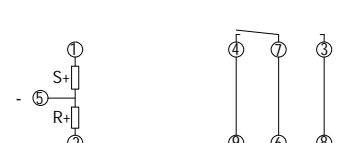
1A



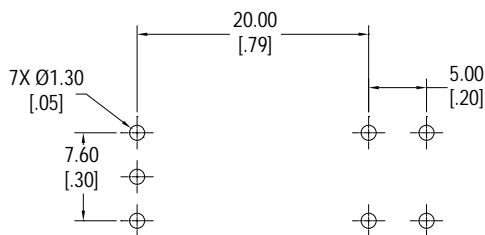
1C



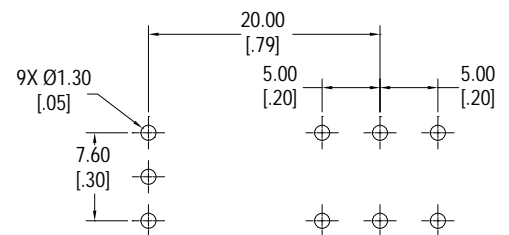
1A Reversed Polarity



1C Reversed Polarity



1A Double Coil



1C Double Coil